



**FIELD  
TO SCHOOL**

# **HOW TO SET UP A SCHOOL GARDEN**

Co-funded by the  
Erasmus+ Programme  
of the European Union





# FIELD TO SCHOOL

## WHY SET UP A SCHOOL GARDEN?

School gardens are an integral part of field to school programmes and offer a multitude of educational opportunities.

They are wonderful instructional tools and engaging spaces in which to explore the entire curriculum.

Whether they are container gardens or school farms, fruit trees or herb gardens, school gardens serve as hands-on, interdisciplinary classrooms for students of all ages.

Co-funded by the  
Erasmus+ Programme  
of the European Union





# FIELD TO SCHOOL

## GETTING STARTED

On the next few slides are ten Suggested steps for getting started with a school garden project. Each step is a learning opportunity.



Co-funded by the  
Erasmus+ Programme  
of the European Union





# FIELD TO SCHOOL

## 1. COLLABORATE FOR SCHOOL GARDEN SUCCESS!

Involve school administrators, facilities staff, food service staff, students, teachers and the community throughout the planning process.

Develop a vision for the school garden together, including how it will benefit the school, community and students; how it can be incorporated into existing activities; a plan of action; and list of supporters and commitments.



Co-funded by the  
Erasmus+ Programme  
of the European Union





# FIELD TO SCHOOL

## 2. IDENTIFY GOALS FOR THE GARDEN

As a group, consider these questions:

- a. What purpose will the garden serve (education, food production)?
- b. How will the garden be integrated into learning?
- c. How will students engage with the garden?
- d. Who will plan and maintain the garden?
- e. What will happen to the garden when school is not in session?
- f. Will the garden have a theme?







# FIELD TO SCHOOL

## 3. DESIGNING THE SCHOOL GARDEN

This is a great step for engaging students.

- Consider the size of your space, existing features, soil, sunlight, water sources, drainage, security, safety, and plant selection.
- Test soil for toxins, contaminants or other harmful substances.
- Enlist the help of a local farmer, gardener, or other expert
- Dream big but also remain practical. A few containers in a courtyard can provide as much hands-on experience as a large garden.
- Identify your garden manager/coordinator—this person will keep things moving forward.





# FIELD TO SCHOOL

## 3. DESIGNING THE SCHOOL GARDEN



Co-funded by the  
Erasmus+ Programme  
of the European Union







# FIELD TO SCHOOL

## 4. SECURE FUNDING & RESOURCES

- Consider donations, grants and specific fundraising events.
- Ask school administrators and parent groups for contributions from their budgets.
- Hardware stores and other local businesses often donate gardening supplies such as gloves, plants, soil and gardening tools.
- Consider a school garden fundraising activity/event such as seed or plant sales; hosting a garden dinner, school farmers market; a craft or art sale with a garden theme; or create a “Donate a Tool Day.”







# FIELD TO SCHOOL

## 4. SECURE FUNDING & RESOURCES



Co-funded by the  
Erasmus+ Programme  
of the European Union





# FIELD TO SCHOOL

## 5. PLANT THE GARDEN

- The fun begins! This is usually the quickest step in the process, but one that children of all ages (and adults) can take part in.
- Consult experienced gardeners and regional planting guides to help decide when and what to plant.
- Planting day is a great way to raise awareness about your project, so get the word out through newsletters, flyers and other avenues.





# FIELD TO SCHOOL

## 6. MAINTAINING YOUR GARDEN

The work with a school garden doesn't end on planting day. It is important to continue to care for the garden year-round so that students can enjoy the garden for years to come.

- Develop a sustainability plan that includes regular maintenance
- Create a schedule for watering, weeding, thinning, mulching, fertilising, composting and other activities
- Students can do many of these tasks as part of a lesson plan, and you can reach out to community members and parents for support when school is not in session.







# FIELD TO SCHOOL

## 6. MAINTAINING YOUR GARDEN



Co-funded by the  
Erasmus+ Programme  
of the European Union





# FIELD TO SCHOOL

## 7. SUSTAINING YOUR GARDEN

- Continue to build support by communicating your successes
- Provide training and tools to teachers and staff
- Find other ways to connect the garden with curriculum so that the garden is part of the school and experience.
- Consult with your local health department regarding food safety and regulations for using garden produce in the school meal programme.







# FIELD TO SCHOOL

## 7. SUSTAINING YOUR GARDEN



Co-funded by the  
Erasmus+ Programme  
of the European Union



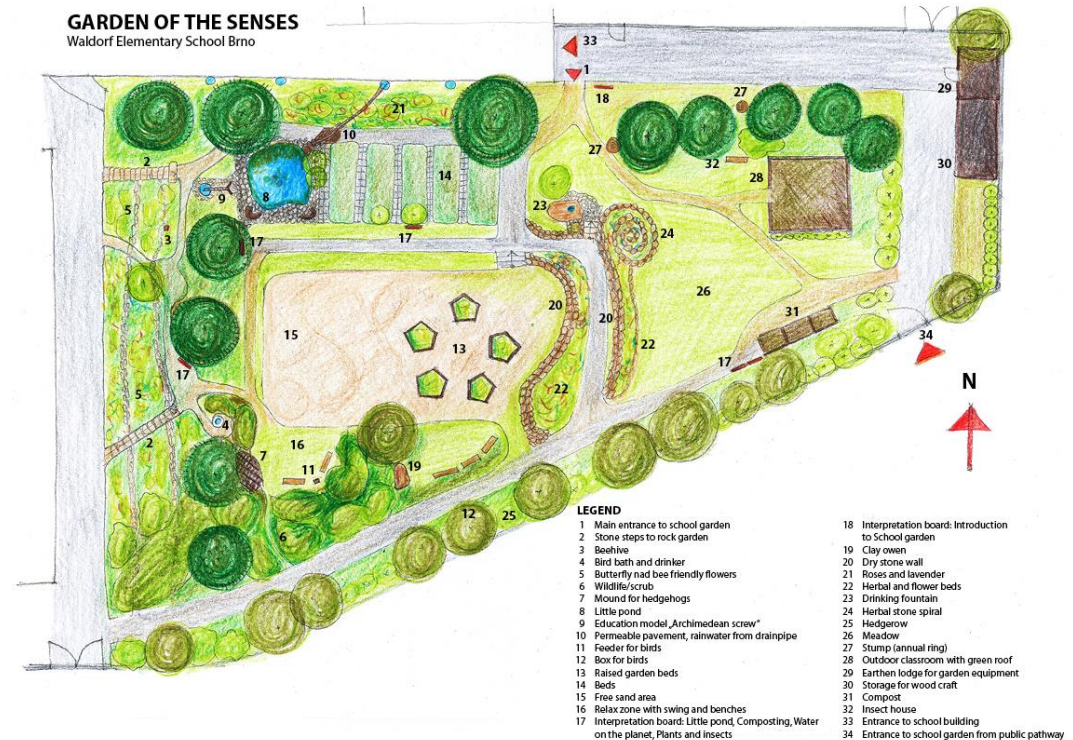




# FIELD TO SCHOOL

## 8. EXAMPLE PLAN

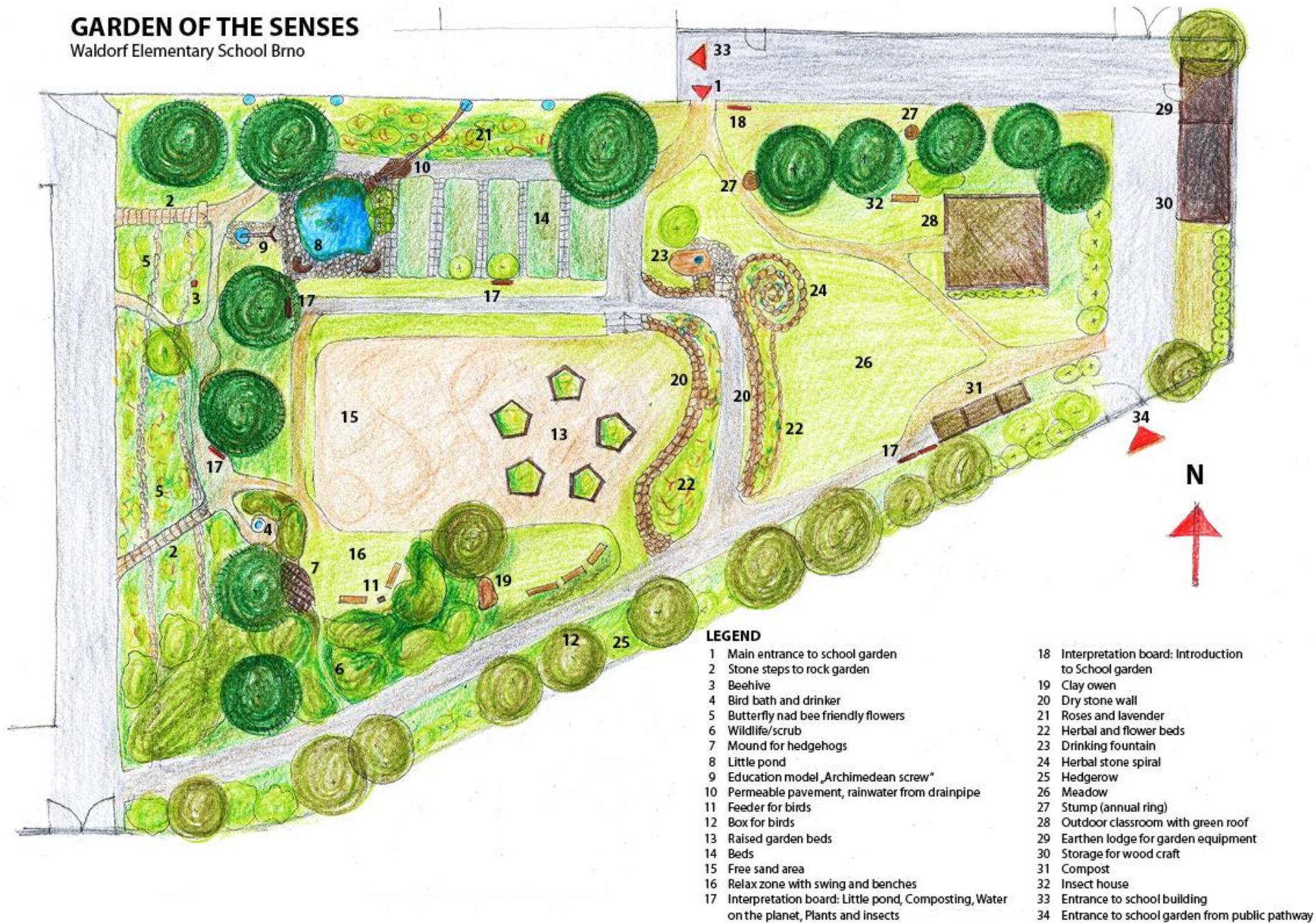
- The next slide / page shows an example of what can be done in the school grounds.
- This garden was designed for the Waldorf School in Brno, Czech Republic.





# GARDEN OF THE SENSES

Waldorf Elementary School Brno



Co-funded by the  
Erasmus+ Programme  
of the European Union







# FIELD TO SCHOOL

## 9. MOST IMPORTANTLY, HAVE FUN!

- All of your work will pay off come harvest time when everyone can enjoy the fruits of their labour!
- Source: [Farmtoschool.org](https://farmtoschool.org)

